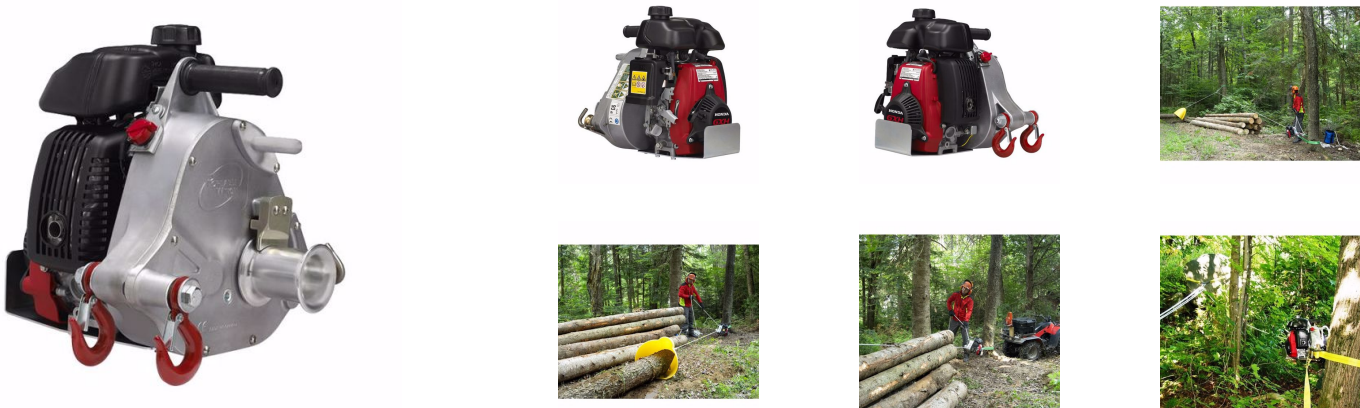




PORTABLE PETROL POWERED CAPSTAN WINCH

Product Code: **PCW5000**



PORTABLE PETROL POWERED CAPSTAN WINCH

This winch is lightweight, portable, gas (petrol) powered, and has a 1000 kg (2200 lb) pulling capacity. If you ever need to bring down hung-up trees, pull out-of-reach logs, get a vehicle un-stuck, move something on a job site or haul livestock out of the bush or water, the PCW5000 is for you.

Weighting only 16 kg (35 lb), this Portable Winch is easily carried and can be anchored to anything using the 2 m (6') long sling provided or the different anchoring accessories.

Use the Portable Winch with any length of double braided polyester low stretch rope. The rope is tied to the object to be moved and wound three or four times around the capstan drum. When the engine is running, the 57 mm capstan drum rotates continuously and the friction created by pulling on the free end of the rope pulls the object. With the 57 mm (2-1/4") capstan drum, the load will move at a speed up to 12 m/minute (40'/min), depending on the weight of the load. You can also buy the 85 mm (3-3/8") capstan drum which will give you up to 18 m/minute (60'/min) speed.

Optional transportation cases are available.
This is a very handy and durable product!

Attachments

PCW Range of Petrol, Air & Electric Portable Capstan Winches Brochure

Specifications

Accessories - Included	Polyester Sling 60mm x2m
Capacity	Max Pulling Force: Single Line: 1,000 (kg) Double Line: 2,000 (kg)
Capstan Drum	Installed: 57mm Diameter Optional: 85mm Diameter
Dimensions	37.1cm Long x 36.6cm Wide x 36.6cm High
Engine Power	4-Stroke Hinda GXH-50cc
Gear Ratio	110:1
Gearbox & Gears	Aluminium alloy gearbox, Heat treated 3 stage spur gears, Shafts mounted on ball bearings, oil bath lubrication.
Rope Capacity	Low stretch double braided polyester - unlimited length Minimum Diameter: 10mm Maximum Diameter: 16mm
Speed	with 57mm Drum: 12m/min with 85mm Drum: 18 m/min
Weight	16 (kg)
Work Cycle	Continuous

