

**Air & Allied Sales (Pacific) Pty Ltd**

23 Precision Street  
Salisbury QLD 4107

+617 3272 7999

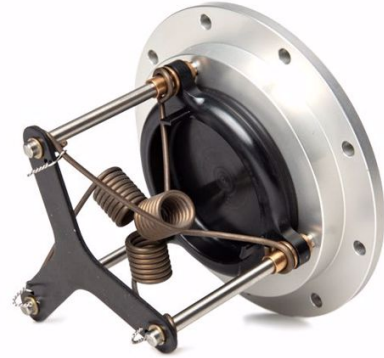
[sales@air-allied.com.au](mailto:sales@air-allied.com.au)



## REDHEAD RECEIVER, TANK MOUNT, 9 BOLT

Brand: **Red Head**

Product Code: **PP20FTM**



### REDHEAD RECEIVER, TANK MOUNT, 9 BOLT

This 2" FIA Tank Mount FIA Female Dry Break Valve receiver (receptacle) valve mounts directly in the top of your fuel cell, eliminating the need for a remote feed hose (there is no provision for adding a remote feed hose).

PP20 Tank Mount Receiver with 4.0 inch bolt circle diameter. 9 Hole configuration designed for #10 attachment fasteners.

Flows approximately 2 gallons per second when connected to the Redhead PP20M Male Probe Push-Pull Refueling Valve (PP20M sold separately).

This product uses a new Viton seal material that is compatible with gasoline, ethanol, E85, methanol, alcohol blends (virtually every fuel except nitromethane).

User serviceable with RRK Seal Kit, gasoline and ethanol compatible.

#### Attachments

[FIA-appendix-J-252-5A](#)

[www.air-allied.com.au](http://www.air-allied.com.au)

Data contained in this document is copyright of Air & Allied (Pacific) Sales Pty Ltd, and as such cannot be reproduced or redistributed, in part or whole, without the expressed permission of Air & Allied (Pacific) Sales Pty Ltd. Errors and Omissions Excepted.