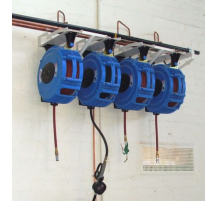
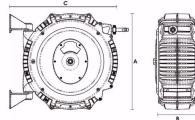


RETRACTABLE HOSE REEL 10MMIDX20M

Brand: **Recoila**

Product Code: **RE-AW1020**



RETRACTABLE HOSE REEL 10MMIDX20M

Air & Water Retractable Hose Reel fitted with 10mm id hose x 20m length of quality hose. Perfect for general workshop applications such as compressed air or cold water washdown.

Inlet fitting is 3/8" Female BSP and outlet on hose end is 3/8" Male BSP.

Also available is a model fitted with EPDM rubber hose, ideal for air applications in fabrication areas where welding spatter adversely affects standard hoses.

Rugged, lightweight polypropylene reels!

GEN III FEATURES

- * Highest quality finished edge spring steel strip
- * Full flow swivels and fluid paths with positive crimp hose fitting
- * All position positive latching system
- * Tough, impact, corrosion resistant and UV stabilized polypropylene, with anti static and flame retardant properties
- * Unique ratchet tensioning system
- * Wall mounting system allows the reel to swivel from side to side
- * Replaceable mouth guard and hose stop
- * Large side covers for easy access in servicing and maintenance routines
- * Unique locking pin port for added safety when servicing the reel
- * Easy mounting template included

AN INDUSTRIAL LEGEND ReCoila's GEN III engineered composite polypropylene reels are best-sellers for a reason - they're tough, reliable, functional and durable.

Specifications

| | |
|----------------------|-----------------|
| Dimension A | 490 mm |
| Dimension B | 239 mm |
| Dimension C | 599 mm |
| Finish | Composite |
| Hose Length | 20 m |
| Inlet Fitting | 3/8" Female BSP |
| Inside Diameter (id) | 10 mm |
| Outlet Fitting | 3/8" Male BSP |
| Pressure | 240 psi |
| Weight | 12 kg |

With nearly twenty different application-specific models each with a range of hose sizes and lengths, there's sure to be a reel to suit your application.

The GEN III Series is ideal for a wide range of industrial applications such as air, water, grease, oil, chemicals, gases and more.