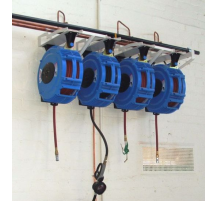
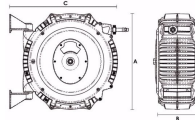


## RETRACTABLE HOSE REEL 12MMIDX15M

Brand: **ReCoila**

Product Code: **RE-AW1215**



### RETRACTABLE HOSE REEL 12MMIDX15M

Air & Water Retractable Hose Reel fitted with 12mm id hose x 15m length of quality hose. Perfect for general workshop applications such as compressed air or cold water washdown.

Inlet fitting is 1/2" Female BSP and outlet on hose end is 1/2" Male BSP.

Also available is a model fitted with EPDM rubber hose, ideal for air applications in fabrication areas where welding spatter adversely affects standard hoses.

Rugged, lightweight polypropylene reels!

#### GEN III FEATURES

- \* Highest quality finished edge spring steel strip
- \* Full flow swivels and fluid paths with positive crimp hose fitting
- \* All position positive latching system
- \* Tough, impact, corrosion resistant and UV stabilized polypropylene, with anti static and flame retardant properties
- \* Unique ratchet tensioning system
- \* Wall mounting system allows the reel to swivel from side to side
- \* Replaceable mouth guard and hose stop
- \* Large side covers for easy access in servicing and maintenance routines
- \* Unique locking pin port for added safety when servicing the reel
- \* Easy mounting template included

AN INDUSTRIAL LEGEND ReCoila's GEN III engineered composite polypropylene reels are best-sellers for a reason - they're tough, reliable, functional and durable.

#### Specifications

Dimension A	490 mm
Dimension B	239 mm
Dimension C	599 mm
Finish	Composite
Hose Length	15 m
Inlet Fitting	1/2" Female BSP
Inside Diameter (id)	12 mm
Outlet Fitting	1/2" Male BSP
Pressure	240 psi
Weight	12 kg

With nearly twenty different application-specific models each with a range of hose sizes and lengths, there's sure to be a reel to suit your application.

The GEN III Series is ideal for a wide range of industrial applications such as air, water, grease, oil, chemicals, gases and more.