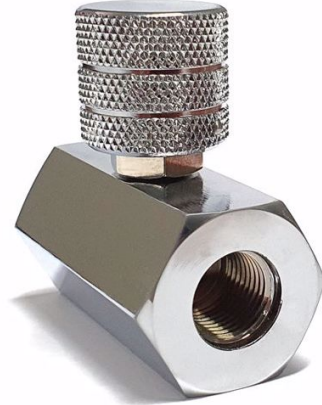


300BAR BLEED BLOCK-CAPTIVATED SCREW

Product Code: **RGPRSF300BBBCB14**



300BAR BLEED BLOCK-CAPTIVATED SCREW

This is a 300BAR rated High pressure Bleed Block fitted with an encapsulated bleed screw for added safety.

This product is used to depressurise lines SAFELY, BEFORE you attempt to disconnect the line, or any products attached to it, to avoid dangerous situations whereby the operator can be injured from high pressure disconnection of the line. One such product where to utilise this product is on your Air Lance (Spike / Wand) to allow you to safely disconnect it from the line without having to attach it to the car valve to release the internal pressure.

We also highly recommend our safety disconnect quick release connector RDP20500021R.

The block has 2 x 1/4" BSPP (parallel) female threads.

Specifications

Thread Size	2 x 1/4" BSPP (Parallel) female threads
-------------	---